

# SERVICES AVAILABLE TO ALL STAFF AND FACULTY

**FRESNOSTATE**  
College of Social Sciences



## Employee Assistance Program

Ron Steele  
Onsite LifeMatters EAP services  
Lab School 185  
559.278.1655  
ronsteele@csufresno.edu

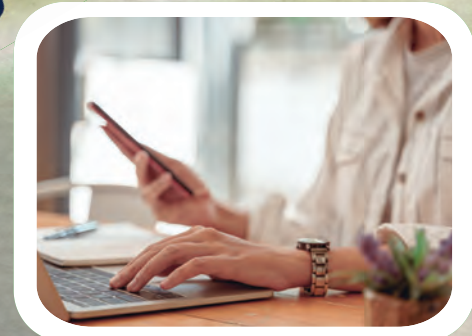
Consult for counseling, workplace conflict, and other concerns  
[adminfinance.fresnostate.edu/hr/eap/index.html](http://adminfinance.fresnostate.edu/hr/eap/index.html)



## Confidential Leave Coordinator

Sarah Confer  
Confidential Leave Coordinator  
559.278.8237  
sarahconfer@mail.fresnostate.edu

Consult for family and medical leave options  
[adminfinance.fresnostate.edu/hr/benefits/leavesofabsence/medical.html](http://adminfinance.fresnostate.edu/hr/benefits/leavesofabsence/medical.html)



## Employee Accommodation Services

Julie Irwin  
Interim ADA Coordinator  
559.278.2032  
julie@csufresno.edu

Consult for ADA, course modality changes, assistive technologies, and ergonomics  
[adminfinance.fresnostate.edu/hr/employee\\_ada\\_accommodation\\_services/index.html](http://adminfinance.fresnostate.edu/hr/employee_ada_accommodation_services/index.html)

